

# PROFESSIONAL BATTERY DESIGN AND PRODUCTION BASE

v1.1.25.0101

This is a watermark for the trial version, register to get the full one!

Benefits for registered users:

- 1.No watermark on the output documents.
- 2.Can operate scanned PDF files via OCR.
- 3.No page quantity limitations for converted PDF files.

**Remove Watermark Now**

✉ info@jrepower.com

☎ +86 18928461197

📍 Building B4b, Yingzhan Industrial Zone, Kengzi Street,  
Pingshan New District, Shenzhen, China

🌐 www.jrepower.com

# 2026



This is a watermark for the trial version, register to get the full one!

Benefits for registered users:

- 1.No watermark on the output documents.
- 2.Can operate scanned PDF files via OCR.
- 3.No page quantity limitations for converted PDF files.

**Remove Watermark Now**

## **Shenzhen JREPower Tech Co., Ltd.**

Since its establishment in 2008, Shenzhen JREPower Tech Co., Ltd. has been a pioneering force in Shenzhen's power sector. Our 17-year journey is marked by groundbreaking patents, a world-class R&D team, and exclusive technologies. Housed in an 8,000 m<sup>2</sup> advanced manufacturing center, we control the integrated production and distribution of cutting-edge battery solutions.



JREPower offers a comprehensive range of battery products designed to suit a diverse array of applications. We supply power batteries for golf carts, mini electric vehicles, material handling equipment, sweepers, and aerial work platforms, as well as energy storage system batteries for residential, outdoor, industrial, and commercial use. In addition, JREPower introduces advanced sodium-ion batteries, engineered for automotive and equipment starting applications.

**2008-2012**  
The Foundation  
Period of The  
Lithium Battery  
Business

**2013-2016**  
Headquarters  
System Construc-  
tion Period

**2017-2018**  
Technology Break  
Through Certifica-  
tion Period

**2019-2023**  
Production Upgrade  
Period

**2024-2025**  
The Start-up Period  
of Global Layout

**2025+**  
Prospects for The  
Construction of  
The New Energy  
Ecosystem

## Solutions for building a new energy ecosystem

With battery production as the core, and integrating high-quality supply channel resources related to the battery industry for customers; build a solution for the new energy ecosystem.

17+ Years

200+ Employees

80+ Patents and  
certificates

17MWh

Engineering Your Success

Innovating for  
Sustainability

Monthly Production  
Capacity

This is a watermark for the trial version, register to get the full one!

Benefits for registered users:

- 1.No watermark on the output documents.
- 2.Can operate scanned PDF files via OCR.
- 3.No page quantity limitations for converted PDF files.

**Remove Watermark Now**

20+ Global Clients

Building Trust Worldwide

20+ Sales Experts

Multilingual & Professional

**Service  
capacity**



**\$30M+ Annual Sales**

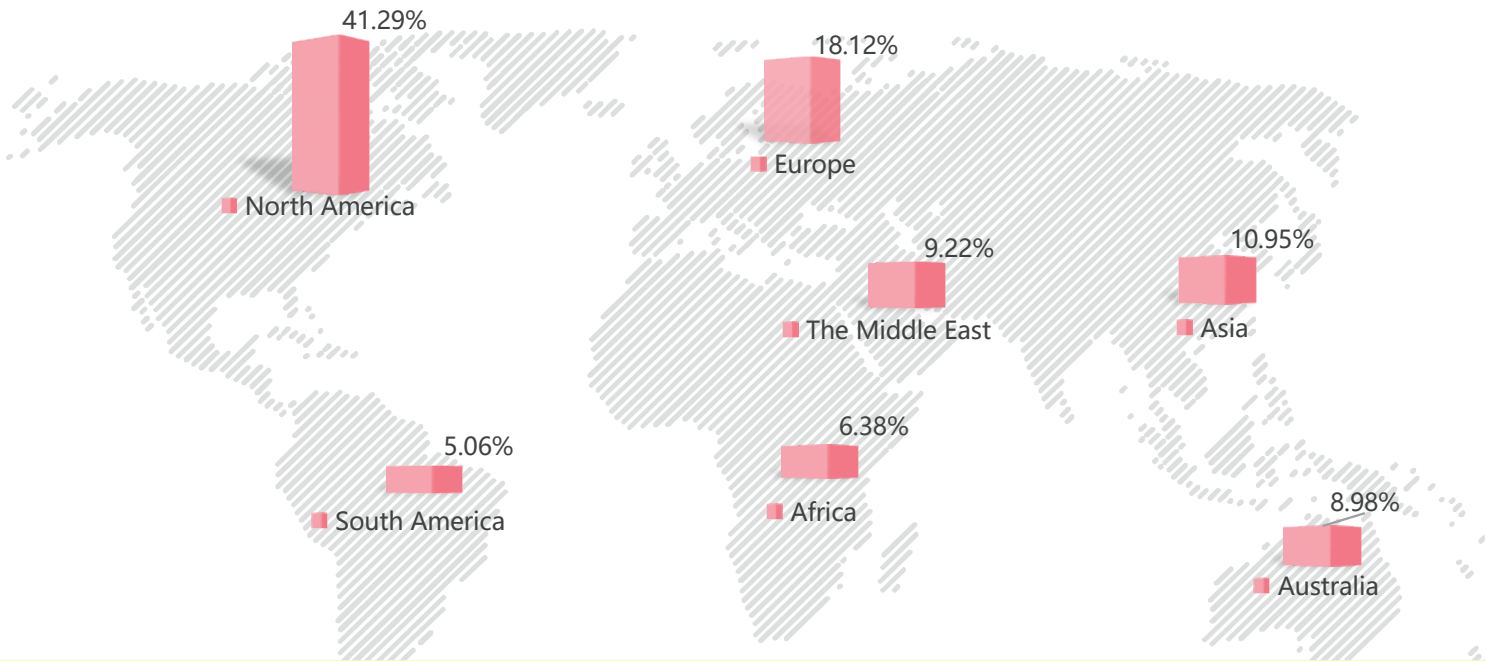
A Track Record of Success

**90%+ Client Retention**

Committed to Long-Term  
Partnership



# Global market distribution



This is a watermark for the trial version, register to get the full one!

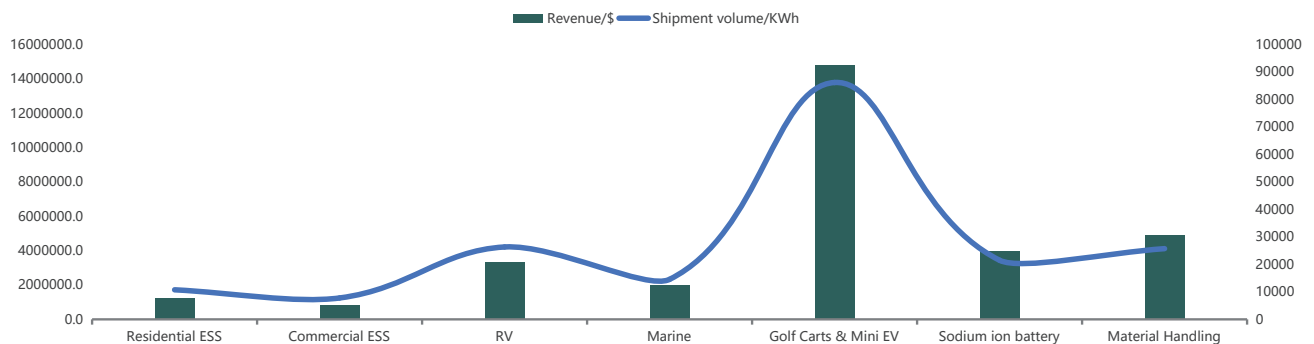
Benefits for registered users:

- 1.No watermark on the output documents.
- 2.Can operate scanned PDF files via OCR.
- 3.No page quantity limitations for converted PDF files.

[Remove Watermark Now](#)



JREPower is a leading factory in the field of sodium-ion automotive, marine and motorcycle starting batteries in China. Sodium ion production and sales have been ongoing for two years. And establish a sodium-ion battery production factory in Indonesia.



**01** The product's market sales cover multiple application scenarios such as power and energy storage.

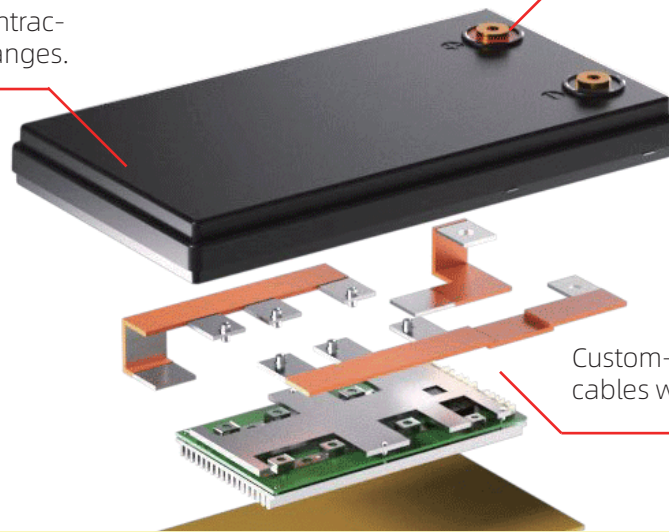
**02** The golf cart & Mini EV batteries and other types of power batteries are the main source of sales revenue for JREPower.

**03** Sodium-ion batteries have become a new source of growth for JREPower.

# JRE LIFEPO4 DEEP CYCLE BATTERY

Built-in waterproof vent to handle expansion and contraction from temperature changes.

Copper terminals for better current flow.



Custom-made flexible main cables with good craftsmanship.

This is a watermark for the trial version, register to get the full one!

Benefits for registered users:

- 1.No watermark on the output documents.
- 2.Can operate scanned PDF files via OCR.
- 3.No page quantity limitations for converted PDF files.

**Remove Watermark Now**

Automated glue filling ensures even sealing and can achieve IP67 protection.





Model	Voltage	Capacity	Energy (Wh)	Max Continuous Discharging Current (A)	Cycle LiFe (times)	Size (mm)	Weight (kg)
-------	---------	----------	-------------	--	--------------------	-----------	-------------

JszE-LF1525ME	12.8V	40Ah	512	60	6000 @80% DOD	195*133*171	4.38±0.5
JszE-LF1545ME	12.8V	60Ah	768	100	6000 @80% DOD	229*138*171	5.12±1
JszE-LF15100ME	12.8V	100Ah	1280	100	6000 @80% DOD	260*168*215	11.12±1
JszE-LF15150ME	12.8V	150Ah	1920	150	6000 @80% DOD	330*172*215	16.43±1
JszE-LF15170ME	12.8V	170Ah	2176	200	6000 @80% DOD	330*172*215	16.87±1
JszE-LF15185ME	12.8V	200Ah	2560	200	6000 @80% DOD	483*170*240	21.06±1

This is a watermark for the trial version, register to get the full one!

Benefits for registered users:

- 1.No watermark on the output documents.
- 2.Can operate scanned PDF files via OCR.
- 3.No page quantity limitations for converted PDF files.

**Remove Watermark Now**

JszE-LF15285ME	12.8V	300Ah	3840	200	6000 @80% DOD	345*190*245	30.56±2
JszE-LF15325ME	12.8V	340Ah	4354	200	6000 @80% DOD	345*190*245	31.66±2
JszE-LF1935ME	25.6V	50Ah	1280	60	6000 @80% DOD	330*172*215	10.95±1
JszE-LF1985ME	25.6V	100Ah	2560	100	6000 @80% DOD	406*173*218	21.86±2
JszE-LF19135ME	25.6V	150Ah	3840	150	6000 @80% DOD	522*239*218	32.73±2
JszE-LF19185ME	25.6V	200Ah	5120	200	6000 @80% DOD	520*269*220	43.57±2
JszE-LF2325ME	38.4V	40Ah	1536	60	6000 @80% DOD	330*172*215	13.13±1
JszE-LF2335ME	38.4V	50Ah	1920	60	6000 @80% DOD	330*172*215	16.41±1
JszE-LF2345ME	38.4V	60Ah	2304	60	6000 @80% DOD	330*172*235	19.68±1
JszE-LF2385ME	38.4V	100Ah	3840	100	6000 @80% DOD	345*190*245	32.73±2
JszE-LF2785ME	51.2V	100Ah	5120	100	6000 @80% DOD	520*269*220	43.57±2

# JRE LIFEPO4 GOLF CART BATTERY

Unique waterproof edge and sealing design for IP65 rating.

Special internal structure for improved shock resistance.

This is a watermark for the trial version, register to get the full one!

Benefits for registered users:

- 1.No watermark on the output documents.
- 2.Can operate scanned PDF files via OCR.
- 3.No page quantity limitations for converted PDF files.

[Remove Watermark Now](#)

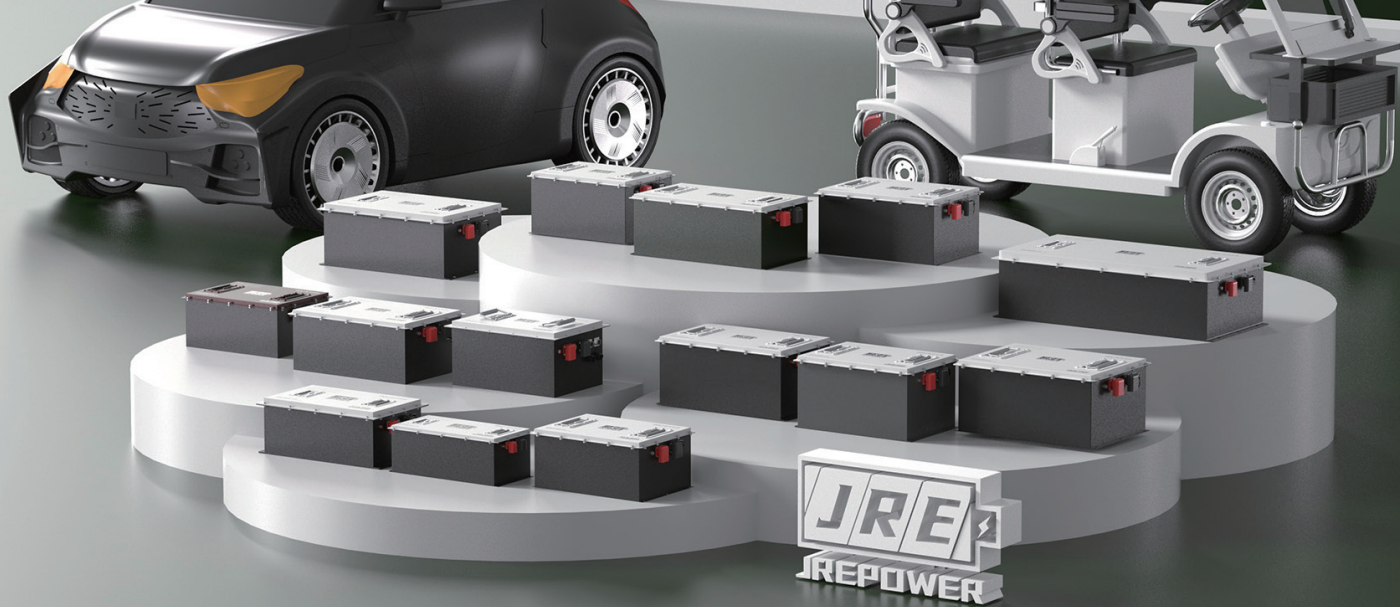
Self-developed BMS  
compact, simple, and  
supports Bluetooth/4G/GPS.

Supporting parallel use, the communication port can connect multiple batteries in parallel and display their information on one screen

Integrated external switch and screen for easy operation.

Oval holes for easier installation





Model	Voltage	Capacity	Energy (Wh)	Max Continuous Discharging Current (A)	Cycle LiFe (times)	Size (mm)	Weight (kg)
JszG-LF2350	38.4V	65Ah	2496	150	6000 @80% DOD	317*254*229	22.0±3
JszG-LF2410	38.4V	105Ah	4032	200	6000 @80% DOD	390*340*235	36.4±3
JszG-LF2510	51.2V	105Ah	5376	100	6000 @80% DOD	460*340*235	20.0±1
JszG-LF2750	51.2V	65Ah	3328	150	6000 @80% DOD	375*254*229	28.0±2
JszG-LF2790	51.2V	105Ah	5376	200	6000 @80% DOD	460*340*235	46.4±3
JszG-LF27105	51.2V	120Ah	6144	200	6000 @80% DOD	480*340*235	49.0±3
JszG-LF27135	51.2V	150Ah	7680	200	6000 @80% DOD	540*380*250	61.9±4
JszG-LF27155	51.2V	170Ah	8704	300	6000 @80% DOD	430*390*310	66.0±4
JszG-LF3590	76.8V	105Ah	8064	200	6000 @80% DOD	620*340*235	65.9±5
JszG-LF35155	76.8V	170Ah	13056	300	6000 @80% DOD	530*455*310	95.4±5

This is a watermark for the trial version, register to get the full one!

Benefits for registered users:

- 1.No watermark on the output documents.
- 2.Can operate scanned PDF files via OCR.
- 3.No page quantity limitations for converted PDF files.

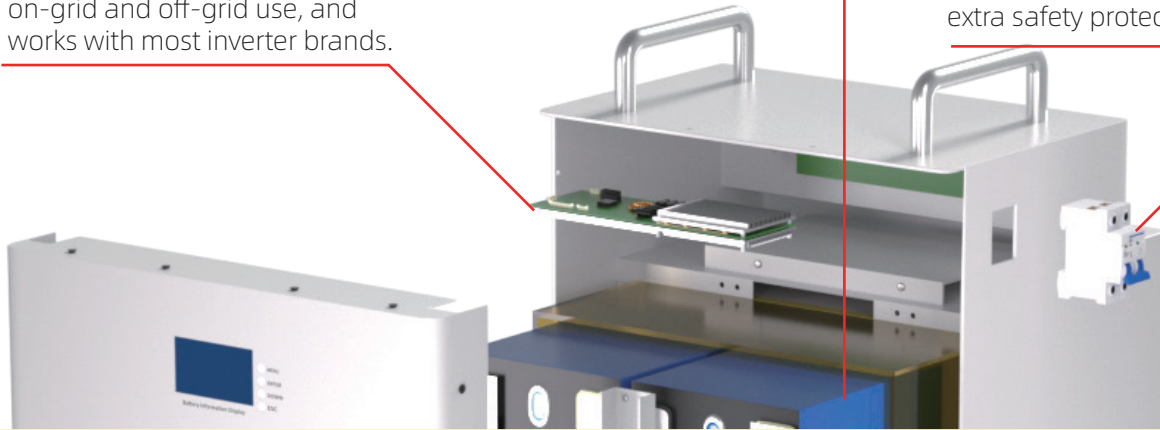
[Remove Watermark Now](#)

# JRE LIFEPO4 ENERGY STORAGE BATTERY

Uses CCS aluminum busbars treated with alkali washing — gives a clean surface for better welding.

In-house BMS supports both on-grid and off-grid use, and works with most inverter brands.

An independent circuit breaker - extra safety protection.



This is a watermark for the trial version, register to get the full one!

Benefits for registered users:

- 1.No watermark on the output documents.
- 2.Can operate scanned PDF files via OCR.
- 3.No page quantity limitations for converted PDF files.

**Remove Watermark Now**



Third-generation design — can be wall-mounted or moved around.

Rounded edges to prevent injuries, especially for kids and the elderly.





Model	Voltage	Capacity	Energy (Wh)	Max Continuous Discharging Current (A)	Cycle LiFe (times)	Size (mm)	Weight (kg)
-------	---------	----------	-------------	--	--------------------	-----------	-------------

This is a watermark for the trial version, register to get the full one!

Benefits for registered users:

- 1.No watermark on the output documents.
- 2.Can operate scanned PDF files via OCR.
- 3.No page quantity limitations for converted PDF files.

**Remove Watermark Now**

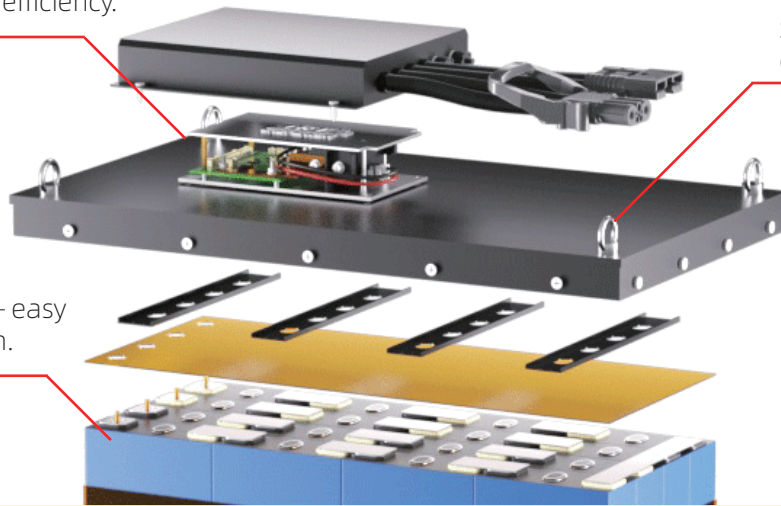
Jsze-LF27185ST	51.2V	200Ah	10240	200	6000 @80% DOD	520*320*340	48±3
Jsze-LF27265ST	51.2V	280Ah	14336	200	6000 @80% DOD	520*320*340	52±3
Jsze-LF27285ST	51.2V	300Ah	15360	200	6000 @80% DOD	520*320*340	55±3
Jsze-LF27325ST	51.2V	340Ah	17408	200	6000 @80% DOD	520*320*340	62±3
Jsze-LF27385ST	51.2V	400Ah	20480	200	6000 @80% DOD	520*320*340	72±3
Vertical (with wheels)							
Jsze-LF27185VE	51.2V	200Ah	10240	200	6000 @80% DOD	435*300*755 (655)	85±3
Jsze-LF27265VE	51.2V	280Ah	14336	200	6000 @80% DOD	435*300*920 (820)	111±5
Jsze-LF27285VE	51.2V	300Ah	15360	200	6000 @80% DOD		113±5
Jsze-LF27325VE	51.2V	340Ah	17408	200	6000 @80% DOD		114±5
Jsze-LF27385VE	51.2V	400Ah	20480	200	6000 @80% DOD		153±5

# JRE LIFEPO4 FORKLIFT BATTERY

Powerful and smart BMS — monitors battery data in real time and improves efficiency.

Strong hooks for easy installation.

Modular cell design — easy to install and maintain.



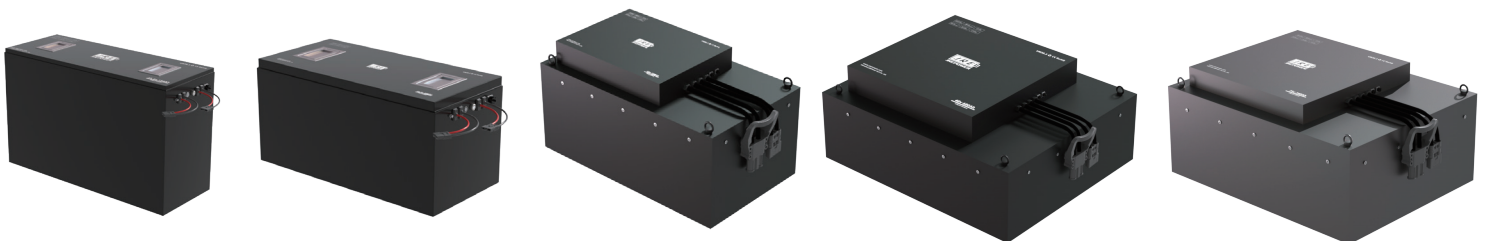
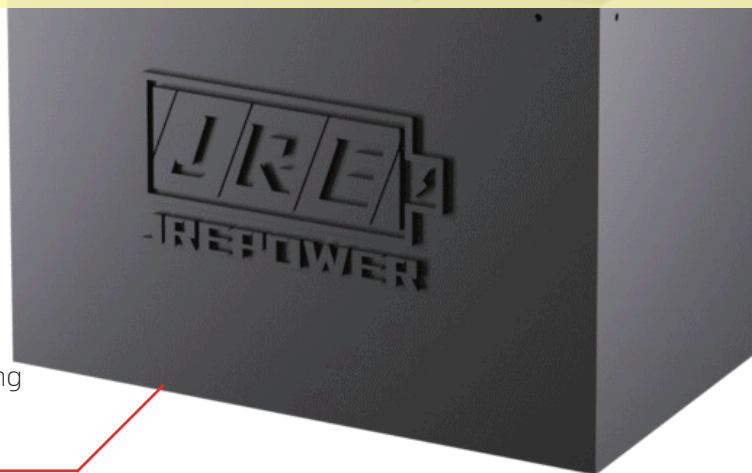
This is a watermark for the trial version, register to get the full one!

Benefits for registered users:

- 1.No watermark on the output documents.
- 2.Can operate scanned PDF files via OCR.
- 3.No page quantity limitations for converted PDF files.

[Remove Watermark Now](#)

Reinforced metal casing for high-level battery safety.





Model	Voltage	Capacity	Energy (Wh)	Max Continuous Discharging Current (A)	Cycle LiFe (times)	Size (mm)	Weight (kg)
JszT-LF23185	38.4V	200Ah	7680	200	6000 @80% DOD	450*400*250 (350)	122±5
JszT-LF23325	38.4V	340Ah	13056	200	6000 @80% DOD	550*400*250 (350)	98±5
JszT-LF23385	38.4V	380Ah	14592	200	6000 @80% DOD	550*400*250 (350)	131±5
JszT-LF27385	51.2V	400Ah	20480	300	6000 @80% DOD	720*540*250 (350)	177±5
JszT-LF27545	51.2V	560Ah	28672	300	6000 @80% DOD	800*450*590 (690)	263±5
JszT-LF27585	51.2V	600Ah	30720	300	6000 @80% DOD	800*450*590 (690)	263±5
JszT-LF27665	51.2V	680Ah	34816	300	6000 @80% DOD	800*670*250 (350)	268±5
JszT-LF36285	80V	300Ah	24000	200	6000 @80% DOD	900*500*250 (350)	208±5
JszT-LF36385	80V	400Ah	32000	300	6000 @80% DOD	900*500*250 (350)	289±10
JszT-LF36545	80V	560Ah	44800	300	6000 @80% DOD	900*600*590 (690)	370±10

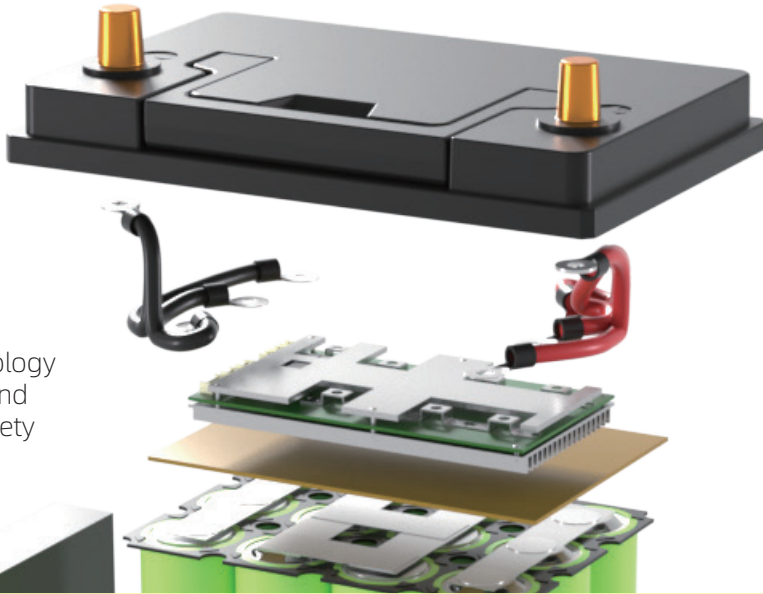
This is a watermark for the trial version, register to get the full one!

Benefits for registered users:

- 1.No watermark on the output documents.
- 2.Can operate scanned PDF files via OCR.
- 3.No page quantity limitations for converted PDF files.

**Remove Watermark Now**

# JRE SODIUM ION STARTING BATTERY



Stable sodium-ion technology minimizes thermal risks and enhances operational safety versus traditional lithium

Revive from full discharge with 0V charging, ensuring reliable recovery and extended usability.

Extreme-Temperature Resilience (-40°C to 70°C)

This is a watermark for the trial version, register to get the full one!

Benefits for registered users:

- 1.No watermark on the output documents.
- 2.Can operate scanned PDF files via OCR.
- 3.No page quantity limitations for converted PDF files.

[Remove Watermark Now](#)

Higher Cold Cranking Amps (CCA) ensure instant ignition, even in sub-zero conditions.



Automated glue filling ensures even sealing and can achieve IP67 protection.

Lightweight design and optimized energy delivery reduce engine load, lowering fuel consumption.





Model	Voltage	Capacity	Energy (Wh)	CCA	Standard	Size (mm)	Weight (kg)
JszS-Na1515 (35)	12.4V	50Ah	620	1300	DIN	207*175*189	6.6±0.5
JszS-Na1545 (L2-400)	12.4V	60Ah	744	1400		244*176*195	8.0±0.5
JszS-Na1555 (57117)	12.4V	70Ah	868	1500		278*176*172	9.2±0.5
JszS-Na1555 (57217)	12.4V	70Ah	868	1500		279*175*189	9.2±0.5
JszS-Na1565 (58043)	12.4V	80Ah	992	1600		318*176*187	10.4±0.5
JszS-Na1575 (60038)	12.4V	90Ah	1116	1700		355*175*188	9.2±0.5
JszS-Na1585 (60038)	12.4V	100Ah	1240	1800		355*175*188	10.4±0.5
JszS-Na1555 (60)	12.4V	70Ah	868	1500		260*175*221	9.2±0.5
JszS-Na1555 (70)	12.4V	80Ah	992	1600		306*174*220	10.4±0.5

This is a watermark for the trial version, register to get the full one!

Benefits for registered users:

- 1.No watermark on the output documents.
- 2.Can operate scanned PDF files via OCR.
- 3.No page quantity limitations for converted PDF files.

**Remove Watermark Now**

Model	Voltage	Capacity	Energy (Wh)	CCA	Standard	Size (mm)	Weight (kg)
JszS-Na1535 (35)	12.4V	50Ah	620	1300	DIN	207*175*189	6.6±0.5
JszS-Na1545 (L2-400)		60Ah	744	1400		244*176*195	8.0±0.5
JszS-Na1555 (57117)		70Ah	868	1500		278*176*172	9.2±0.5
JszS-Na1555 (57217)		70Ah	868	1500		279*175*189	9.2±0.5
JszS-Na1565 (58043)		80Ah	992	1600		318*176*187	10.4±0.5
JszS-Na1575 (60038)		90Ah	1116	1700		355*175*188	9.2±0.5
JszS-Na1585 (60038)		100Ah	1240	1800		355*175*188	10.4±0.5

JREpower Lithium Battery.

Just Real Energy.

Join Reliable Energy.

As you wish. As you live!

This is a watermark for the trial version, register to get the full one!

Benefits for registered users:

- 1.No watermark on the output documents.
- 2.Can operate scanned PDF files via OCR.
- 3.No page quantity limitations for converted PDF files.

[Remove Watermark Now](#)





This is a watermark for the trial version, register to get the full one!

Benefits for registered users:

- 1.No watermark on the output documents.
- 2.Can operate scanned PDF files via OCR.
- 3.No page quantity limitations for converted PDF files.

**Remove Watermark Now**



*Automated  
Technology of  
Assembly Process*



*Production  
Customization  
visualization  
Management*



*A Complete Quality  
Inspection System  
That Can be Traced  
Throughout The  
Process.*



*After-sales Technical  
Support, Professional  
Service Team, Perfect  
After-sales Policy*